

# The expression form and application research of order sense in modern oil painting creation

Wang Kaidong

*Academy of Fine Arts, Northeast Normal University, Changchun, Jilin, China*

**Abstract:** *A sense of order is an important factor in ensuring that oil paintings are highly expressive. A distinct sense of order enhances the colorful external art form and unique expression style of oil paintings. This paper mainly explores the expression form of the sense of order in the modern oil painting creation and how to build a sense of order in the oil painting creation through the picture space processing, picture color processing, and picture structure processing so as to enhance the artistic appeal and visual impact of the works.*

**Keywords:** *sense of order; modern oil painting creation; form of expression; application analysis*

## 1. Introduction

The abstract factor, a sense of order, is an important element that promotes oil painting to maintain its vigorous vitality in the long period of the development stage, which can not only enable the painter to better express himself but also improve the artistic quality of the works. This paper mainly focuses on the expression, form, and application of a sense of order in modern oil painting creations.

## 2. The Basic connotation of the sense of order

As an important part of culture and art, oil painting creation carries profound cultural deposits and artistic charm. Currently, an increasing number of researchers are dedicating their efforts to the field of oil painting creation, with a particular focus on the sense of order, which significantly influences modern oil painting creation. To sum up, the sense of order mainly involves the orderly and organized arrangement of various elements in the picture through spatial layout, color application, and scientific composition so as to realize the overall harmony and balance of the picture.<sup>[1]</sup>

In order to make the modern oil paintings show the pattern of diversification and individuality in the performance, the painters constantly study the internal logical relationship between space and color structure and strive to make the final works achieve the harmonious unity of vision and perception. Under the background of the continuous development of modern oil painting, painters have evolved from the simple inheritance of painting techniques to the stage of "traditional painting techniques combining innovative techniques and materials." More and more painters tend to innovate their creative techniques, organically integrating abstract, concrete, surreal, and other artistic styles with the sense of order. This trend significantly expands the expression form of a sense of order.

## 3. The expression form of the sense of order in the modern oil painting creation

### 3.1. Space processing

In terms of space processing, modern oil painting usually likes to use the "geometric composition," that is, according to certain aesthetic principles, psychechanics, and order rules, geometric forms such as squares, circles, and triangles are creatively reorganized to form a new visual schema. In order to ensure a pleasing sense of order in the works, the painter usually has to use geometric thinking, vision, and illustrations to deal with the modern oil paintings, including the picture order arrangement and the shape change of the objects.<sup>[2]</sup> Take Paul Cezanne's representative work *The Big Bath Girl* as an example, as shown in Figure 1. "*Big Bath Girl*" is a modern oil painting work that is very excellent in the space processing. The painting depicts a group of naked women gathered on the beach by the river. The tall and beautiful naked bodies of the bathing women are the focus of the painting. Although the

groups of bathing women look messy, through careful observation, one can find that this is carefully arranged: they are leaning against the trunk, some just got up, some squatting on the ground... although the posture is different, whether in the front, side, or back to the trunk of the body, cleverly balancing the picture, the whole is very harmonious. As shown in Figure 2, through the picture, we can see the geometric arrangement between triangles and circles, which is intended by the painter, in order to make objects and images have a sense of order in space.



Figure 1: *The Big Bath Girl* (a representative work by Paul Cezanne)

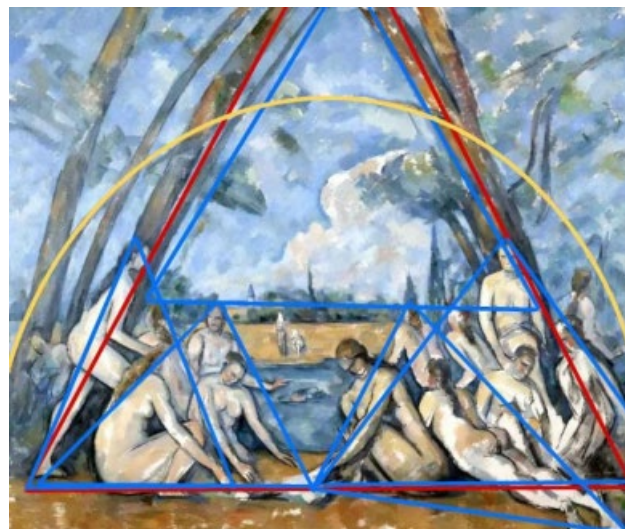


Figure 2: Space processing of "Big Bath Girl"

### 3.2. Color processing

Color processing is an important factor for the successful construction of modern oil painting works. A harmonious picture color can better express the content of the picture, render the emotion, and make the work look more orderly. Therefore, in the creation of modern oil paintings, the color must be treated scientifically. Specifically, the painter to make the work on the color collocation is based on the color structure rule (color, lightness, purity, etc.), the processing of color relationships for continuous exploration, both of which ensure the beauty of color order and ensure the color can conform to their own psychological feelings and aesthetic preferences; the work has obvious personalized characteristics. For example, take the Still Life series by the outstanding Italian painter Giorgio Morandi. When you stare at Morandi's Still Life series, there is a sense of "suddenly breaking into a peaceful forest of philosophy in the middle of the noisy world." In the Still Life series, Morandi, with its low saturation and seemingly gray color, shows endless change and harmony in the simple combination of a bottle of still life with the charm of "one flower, one world, one leaf, one bodhi" in

Zen Buddhism. In the Still Life series, Morandi elevates the subtle layers of gray to new levels, sometimes only implying space but still maintaining its immortal existence. He almost never used bright colors, and every color in his paintings was a gray middle color. Appreciate Morandi's paintings; his colors will captivate you, as illustrated in Figure 3. Morandimo's unique use of color creates a harmonious sense of order in color, while also making him one of the most acclaimed painters of the 20th century.



Figure 3: *The Still Life series (one)*

### 3.3. Structural treatment

Structure is also an important factor affecting the sense of order. Effective structural treatment can make modern oil paintings show a pleasing sense of order. Take the black, white, and gray structure treatment as an example. In modern oil painting, black, white, and gray do not merely denote their literal surface colors but rather serve to represent contrasts in relative lightness levels. The black, white, and gray structure is an effective means to help the painter highlight the main body, eliminate the coarseness, and preserve its essence. It can effectively clarify chaotic elements, enhancing the orderliness of modern oil paintings. Take Baltis's work "In The Landscape with a Single Tree" as an example, as shown in Figure 4. In the work, Baltis divides the whole picture into two parts: bright and dark parts (above and below the blue line), and the two parts confront and offset each other in terms of ability. In the dark part, the painter uniquely interspersed some regular figures of light and shadow, including the triangle on the ground and the lights and shadows on the wall, which makes the whole picture look more harmonious and stable. The painter further enhances the stability of the picture by dividing the distant mountains into geometries of varying sizes and shapes. In this work, "Big Tree" runs through the whole picture, making it look more coordinated and having a good sense of order. In the work "In the Landscape with a Single Tree," although white is relatively small and gray is relatively large, the orderly interweaving of color blocks makes the relationship between black, white, and gray present a sense of order: "I have you, you have you."

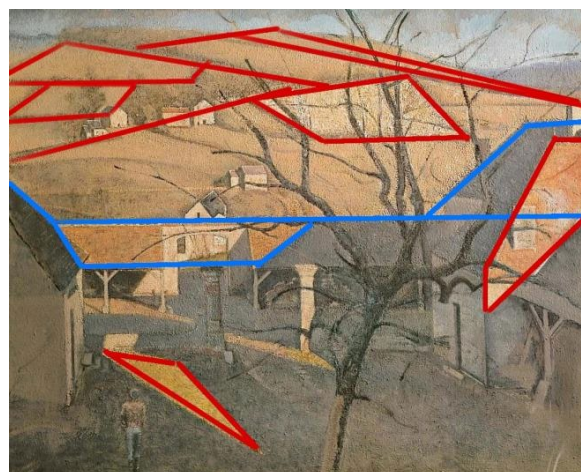


Figure 4: *"In the Landscape with a Single Tree"*

#### **4. Application analysis of the sense of order in the modern oil painting creation**

##### ***4.1. Picture space processing, highlighting the beauty of the oil painting space***

Space is an important factor affecting the establishment of the sense of order. By effectively dealing with the perspective relationship, the sense of hierarchy and the depth, a good spatial order and balance can be created in the oil painting picture.

##### ***4.1.1. Scientific treatment of perspective relationship***

Scientific processing of the perspective relationship can produce a pleasing sense of picture space. Therefore, when dealing with the perspective relationship, we should actively apply the three composition skills of the perspective principle, visual guidance, and space construction. First, the perspective principle constructs the spatial skeleton. The farther away the object is from the observer, the smaller the visual size is. Therefore, the "perspective" should adhere to this principle. For example, in a single point of perspective, all horizontal lines parallel to the picture should remain horizontal, while the lines perpendicular to the picture should converge at one disappearing point in the center of the picture; in a two-point perspective, two sets of parallel lines should converge at the two disappearing points on the left and right sides of the picture; in the multipoint perspective, multiple parallel lines should converge at multiple disappearing points in different locations of the picture. In this way, the whole picture looks more orderly and more harmonious. Secondly, visual guidance controls the audience's visual path. Visual guidance mainly uses elements such as color, shape, and line to lead the audience's line of sight so that it can finally focus on the main body of the picture.<sup>[3]</sup> Visual guidance generally has light and dark guidance, color guidance, and line guidance. Among them, light and dark guidance, as the name suggests, mainly uses the way of light and dark contrast to guide the audience's line of sight so that it can pay attention to the bright or dark part of the picture. For example, if you want the audience to pay more attention to the bright part of the picture, the painter usually makes the background darker; color guidance, mainly using color contrast, guides the audience's line of sight so that it can pay attention to the bright or gray part of the picture. For example, when aiming to direct the audience's attention to the main subject of a painting, artists often employ vibrant colors to accentuate the central theme while subduing the background; concurrently, line guidance operates by leveraging the directional flow of lines to steer the viewer's gaze, thereby concentrating attention on the composition's central focal point. For example, under normal circumstances, the painter will choose to use the river direction or road direction to guide the audience's line of sight so that the audience can pay more attention to the main body of the picture. At the same time, this will also make the work show a positive sense of order on the whole.

##### ***4.1.2. Planar treatment***

Under the influence of Oriental art, the painter in the creation of modern oil painting usually emphasizes the decoration of plane space, namely by weakening the light and shade contrast, simple object outline, and organized color. The paintings reflect a flat, but they can let a person see a certain sense of rhythm; it is also a kind of effective embodiment of order. Therefore, when creating modern oil paintings, contemporary painters can take the way of replanning lines to make the picture simple and clear, scientifically adjust the color, temperature, and hint space depth so that the audience can realize the transformation from "two-dimensional" to "three-dimensional" visually, and effectively highlight the beauty of oil painting space. Reasonable space arrangement allows the audience's eyes to flow naturally through the picture, preventing confusion or uncoordination.

##### ***4.2. Picture color processing to highlight the beauty of oil painting***

Color plays a specific and crucial role in oil painting. Through the rational use of light and shade, contrast and saturation, color can create a harmonious color order. In the modern oil painting creation, the processing of picture color needs to start from the following five aspects:

##### ***4.2.1. Color balance***

In the whole picture, ensure the balance of different colors; you can effectively avoid some or some colors being too prominent, thus creating an uncoordinated situation. Therefore, to balance the color—that is, to ensure that the whole picture has a good sense of order—the painter can reasonably distribute the brightness, purity, and area of the color so that the picture has a good rhythm and atmosphere on the whole.

#### **4.2.2. Color Contrast**

By comparing the light and shade, color phase, and saturation, the dynamics of the picture can be further improved, provide a good visual effect for the audience, and attract their attention. For example, if the color of high contrast is used in modern oil paintings, it can have a strong visual impact on the audience and then attract their attention. Therefore, in the creation of modern oil painting, we can take more of the contrast methods, including cold and warm color contrast, complementary color contrast, lightness contrast, and purity contrast.

#### **4.2.3. Color lightness change**

Color, light, and shade are indispensable to creating light and shadow effects and depth. In modern oil painting, the rational use of highlights and shadows can enhance the three-dimensional sense and texture of the picture. In modern oil painting creation, if the painter wants to express a bright and light feeling, he can use the color of high lightness, and if the painter wants to express the feeling of depression and calm, he can use the color of low lightness.

#### **4.2.4. Color cooling and temperature**

Color temperature is a powerful grasp to convey the painter's emotion and picture atmosphere. Generally speaking, warm colors such as red, orange, and yellow are regarded as lively and enthusiastic, while cool colors such as blue, green, and purple are regarded as calm and quiet. The painter can choose warm or cold colors according to the emotion he wants to express.

#### **4.2.5. Color Transition and Fusion**

Appropriate color transition and fusion can increase the sense of nature and flow of the picture and avoid the occurrence of difficult segmentation. Among them, soft colors can create a smoother transition effect. In the creation of modern oil painting, the choice of color should conform to the overall atmosphere and expression intention of the picture and avoid too much disorderly or uncoordinated color.

### **4.3. Picture structure processing, reflecting the beauty of oil painting structure**

Structure plays a crucial role in enhancing the oil painting picture's sense of order. The creation of a relatively harmonious oil painting work is possible through the scientific collocation and reasonable arrangement of various parts. In modern oil painting, the structure treatment includes line structure processing, color structure processing, light and shadow structure processing, space structure processing, and so on.

#### **4.3.1. Processing of the line structure**

Lines are the basic element of expressing painting language and composition. Line thickness, radian, and direction affect the finished work's appearance. Therefore, the line structure should be arranged in a balanced picture, and it must not be too concentrated or too messy; otherwise, the whole work will not have a pleasing sense of order. In addition, the line structure should match the picture's main body, space, and color.

#### **4.3.2. Treatment of color structure**

Color structure will have a direct impact on the tone and visual impact of the work. Therefore, in the process of creation, it is necessary to choose the appropriate colors, color phase, and lightness and ensure that it can have rhythmic changes and harmony in the picture. It should be noted that the color structure needs to be designed in combination with the picture theme and emotion.

#### **4.3.3. Light and shadow structure processing**

The direction and illumination of the light source will have an impact on the overall effect of the work. A pleasing light and shadow structure can strengthen the three-dimensional sense and atmosphere of the work. Therefore, the direction and strength of the main light source should be selected appropriately so that it can be evenly arranged in the picture.

#### **4.3.4. Spatial structure processing**

Perspective structure, hierarchical structure, and virtual and real structure can further enhance the sense of reality and visual impact of the work. Therefore, we should actively use the spatial structure to enrich the hierarchy and transitional changes of the picture. It should be noted that when dealing with

the spatial structure, we should pay attention to the mutual position relationship between the subjects; otherwise, it will cause spatial chaos or incoherent negative effects and affect the overall sense of order of the picture.

## 5. Conclusion

The sense of order is an indispensable and important factor in the modern oil painting creation. To a certain extent, it determines whether the work can attract the attention of the audience and whether it can become famous and spread throughout the world. In the modern oil painting creation, it is necessary to strengthen the research and application of the sense of order and better play the role of the sense of order in highlighting the main body of the picture, enhancing the harmony of the picture, and deepening the theme of the work.

## References

- [1] Wang Ziyi.(2024).*Analysis and application of the sense of order in oil painting creation*. Published master's dissertation, Shanxi University, Taiyuan city, Shanxi Province.
- [2] Li Ling.(2024).*The construction of the sense of order in the oil painting creation*. Published master's degree thesis, Guizhou University for Nationalities, Guiyang city, Guizhou Province.
- [3] Li Guang.(2025).*The application of Order in oil painting*. *Beauty and Times (middle)*, (01), 36-38.